

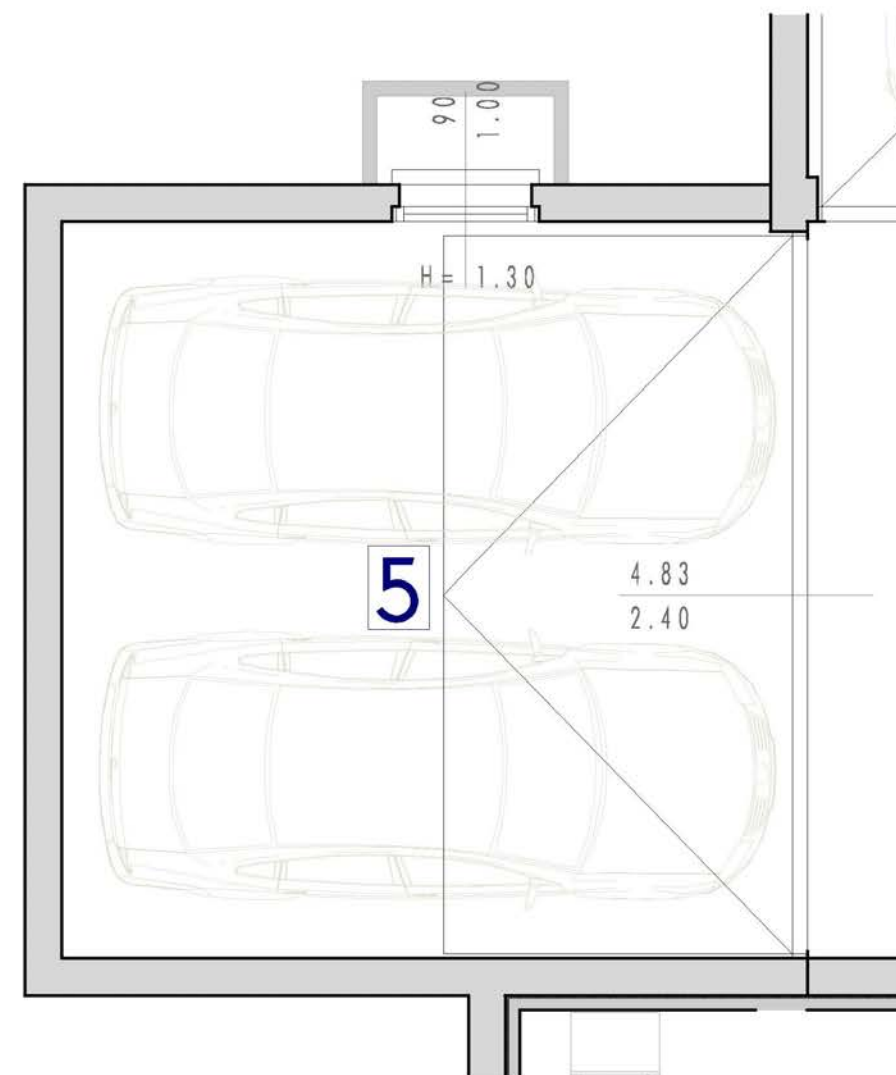
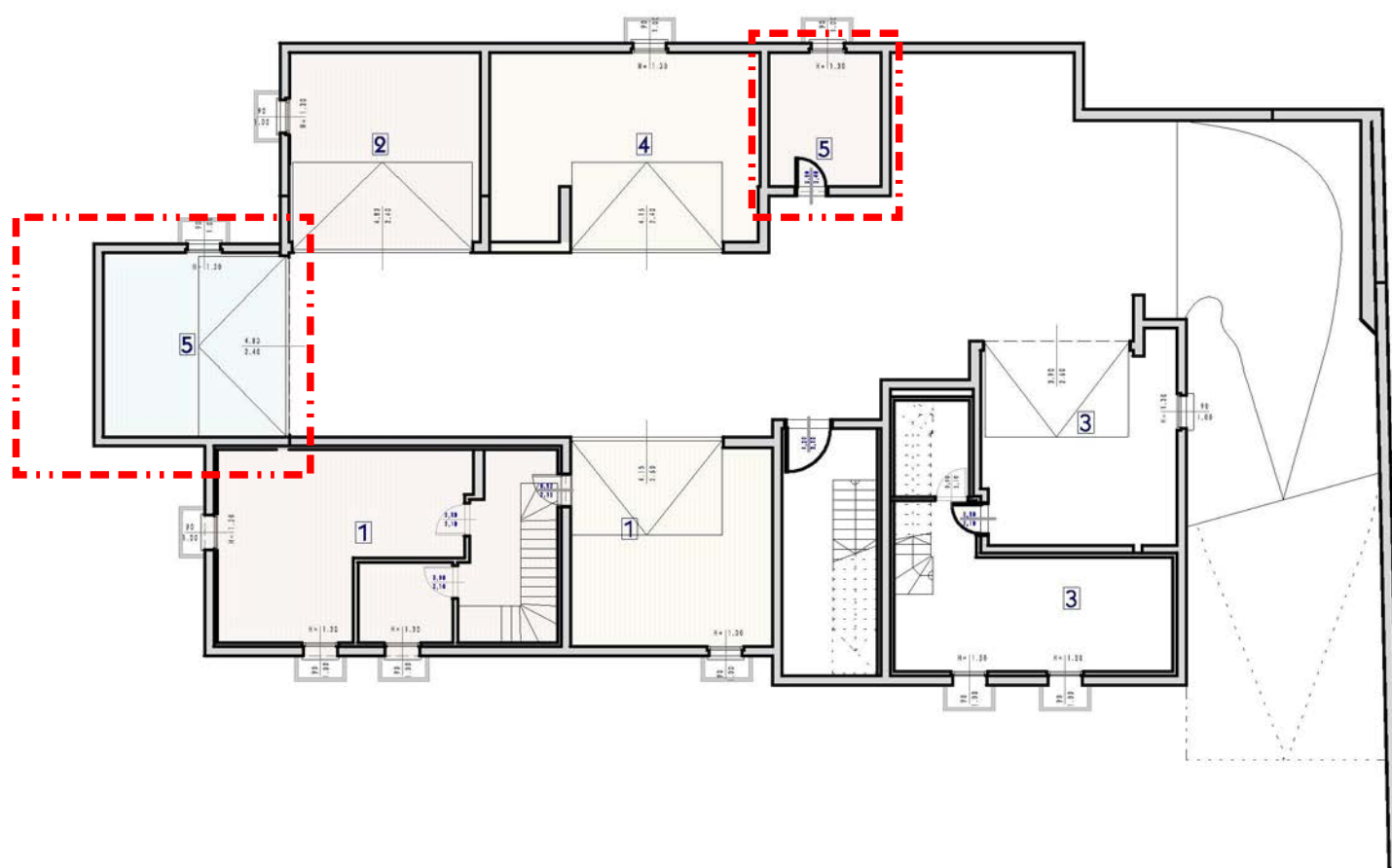
# Villa Francesca

Caerano San Marco - TREVISO

UNITA' n° 05  
livello piano interrato  
Scala 1:50  
tipologia: duplex primo-secondo

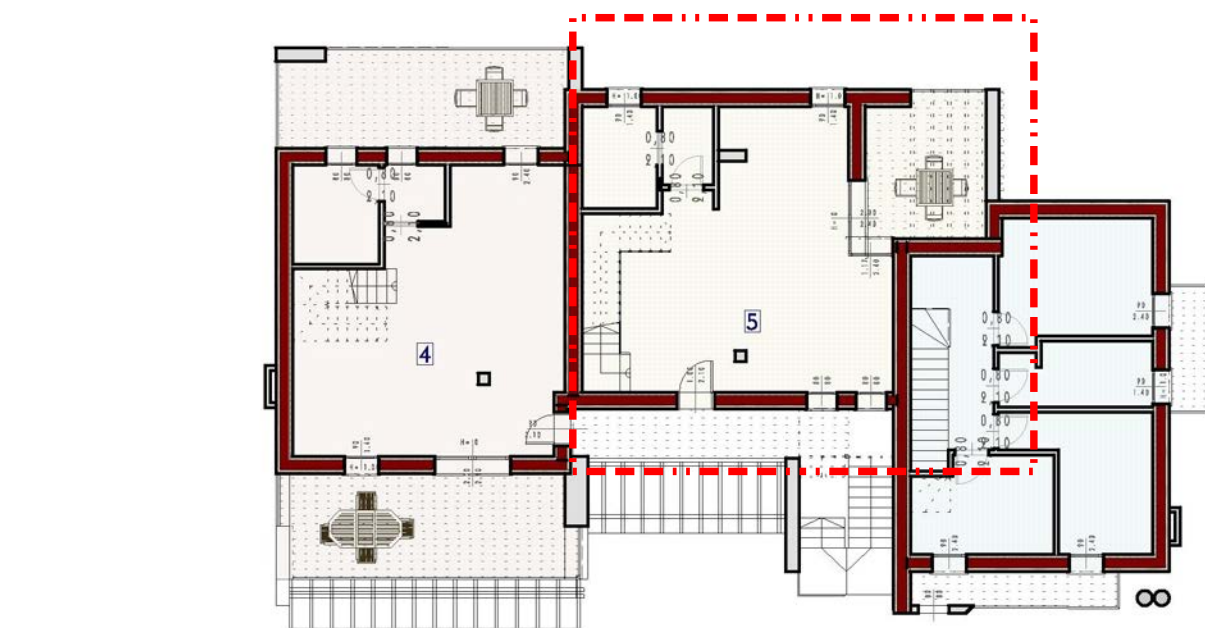


Appartamento n. 5			
Destinazione	mq	k	Sup. comm.
abitazione	69,50	1	69,50
	74,4	1	74,40
Logge - terrazze	100,26	0,33	33,08
Garage	28,87	0,5	14,44
Cantina	13,36	0,5	6,68
Parti comuni	286,39	0,10	28,68
<b>Totale mq.</b>			<b>226,74</b>

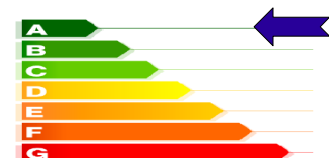


# Villa Francesca

Caerano San Marco - TREVISO



Planimetria generale piano primo: sup. commerciali

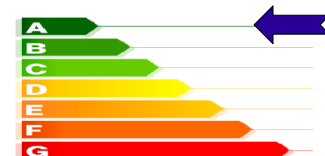


UNITA' n° 05  
 livello piano primo  
 Scala 1:50  
 tipologia:  
 duplex primo-secondo

Appartamento n. 5			
Destinazione	mq	k	Sup. comm.
abitazione	69,50	1	69,50
	74,4	1	74,40
Logge - terrazze	100,26	0,33	33,08
Garage	28,87	0,5	14,44
Cantina	13,36	0,5	6,68
Parti comuni	286,39	0,10	28,68
<b>Totale mq.</b>			<b>226,74</b>



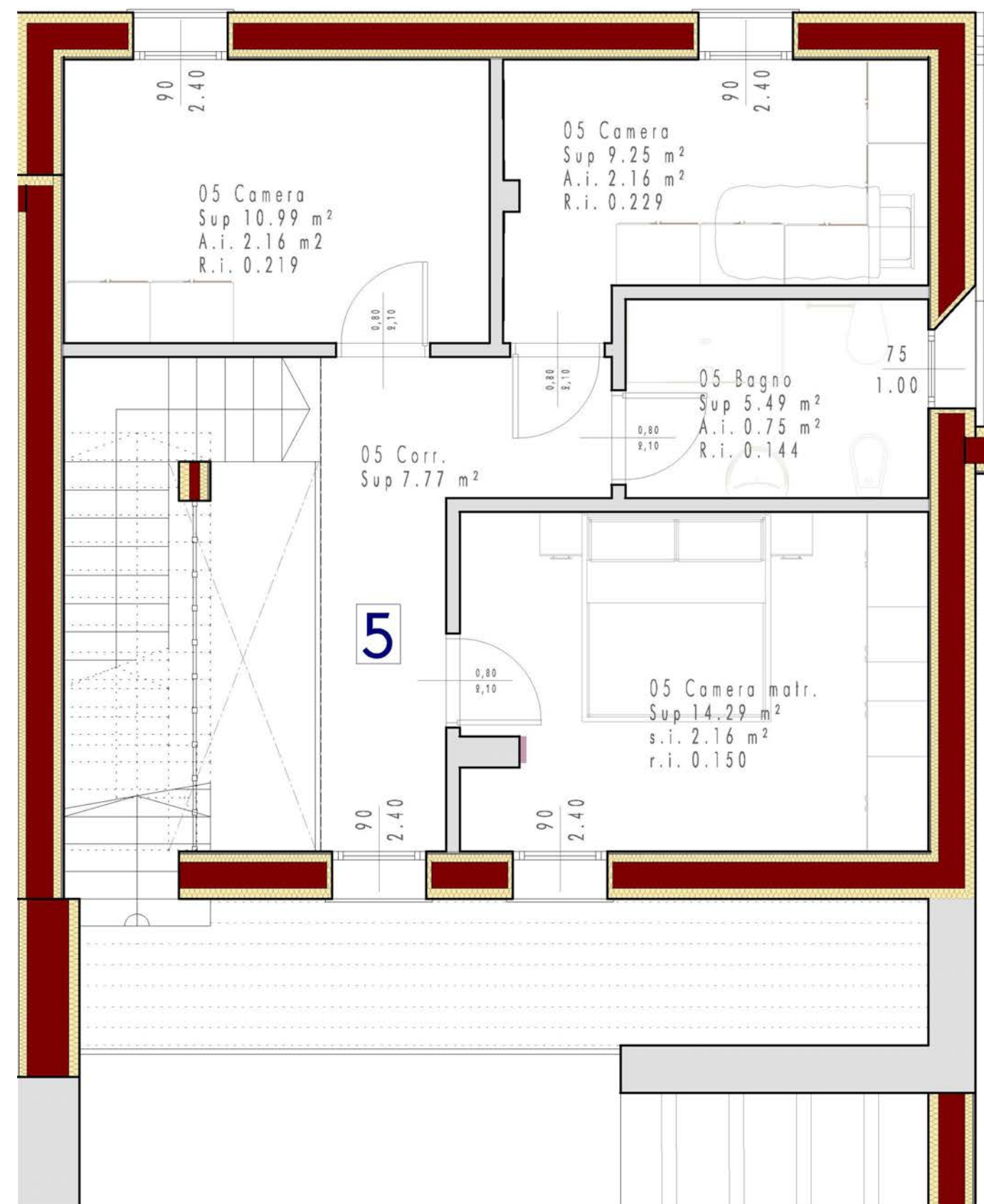
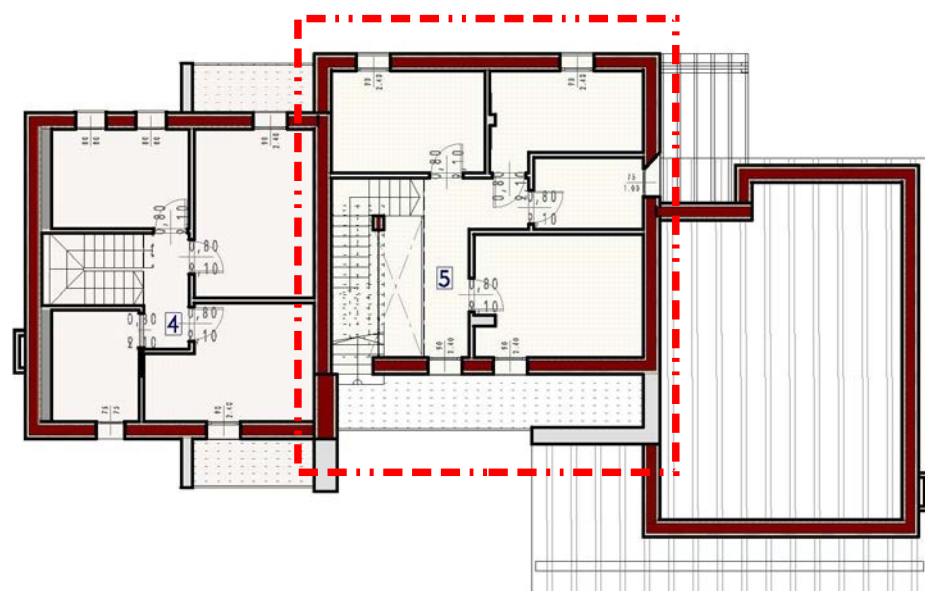


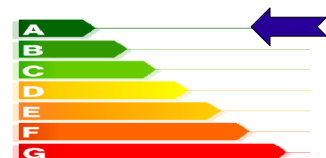


UNITA' n° 05  
livello piano secondo  
Scala 1:50  
tipologia: duplex primo-secondo

### Appartamento n. 5

Destinazione	mq	k	Sup. comm.
abitazione	69,50	1	69,50
	74,4	1	74,40
Logge - terrazze	100,26	0,33	33,08
Garage	28,87	0,5	14,44
Cantina	13,36	0,5	6,68
Parti comuni	286,39	0,10	28,68
<b>Totale mq.</b>			<b>226,74</b>





# Villa Francesca

Caerano San Marco - TREVISO

UNITA' n° 05  
livello piano solarium  
Scala 1:50  
tipologia: duplex primo-secondo



Appartamento n. 5			
Destinazione	mq	k	Sup. comm.
abitazione	69,50	1	69,50
	74,4	1	74,40
Logge - terrazze	100,26	0,33	33,08
Garage	28,87	0,5	14,44
Cantina	13,36	0,5	6,68
Parti comuni	286,39	0,10	28,68
<b>Totale mq.</b>			<b>226,74</b>

